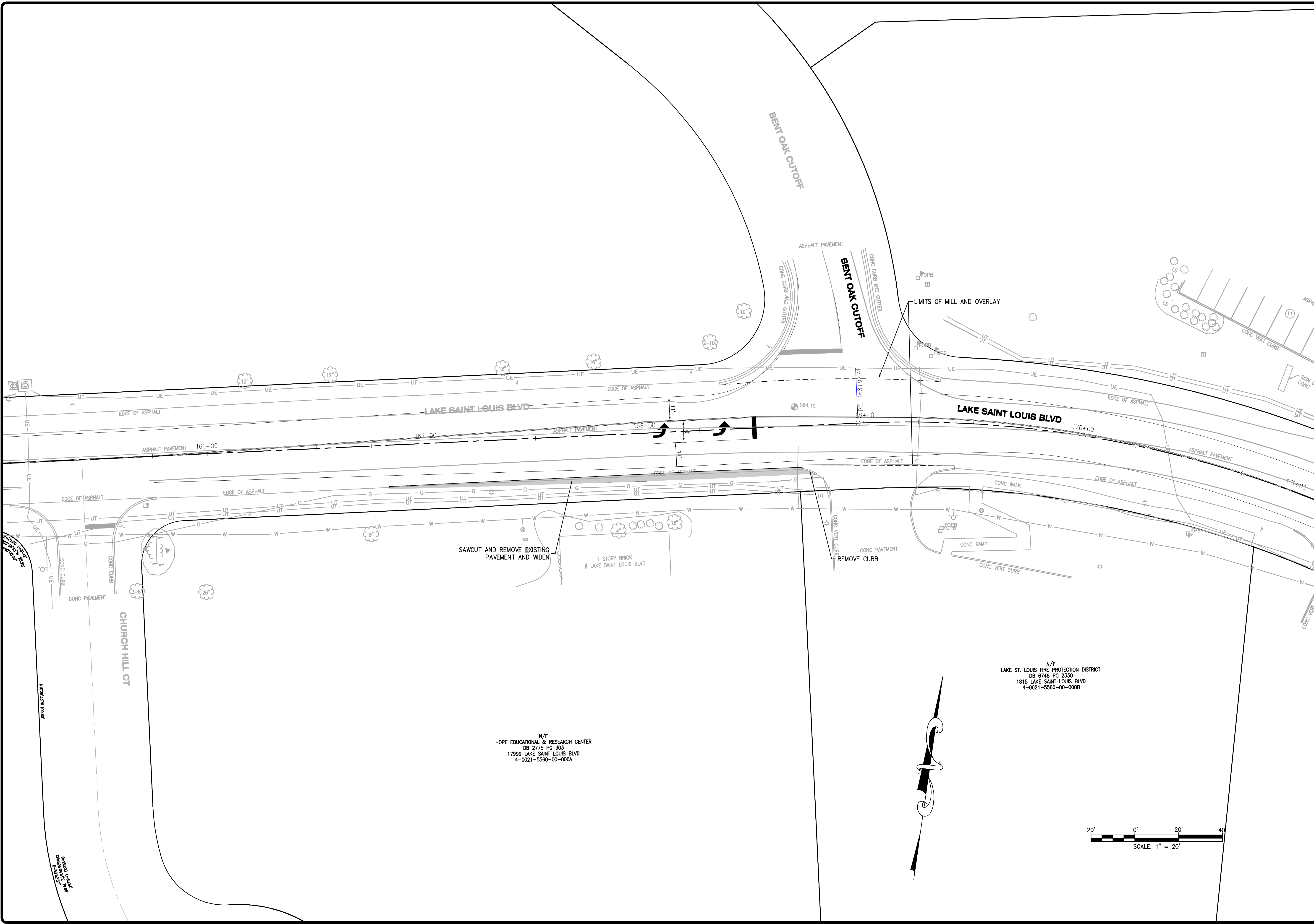
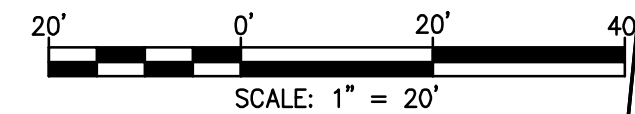


USER: Tim Beyer T8: C8.0 PLAN SHEET
 DATE: 03/09/2020
 DRAWING: S:\JOBS\Jobs2019\19-0104\CADD\C-Plan\PlanSheets\0_Plan_LSI_BVLD_PUBLIB_MEETING_EXHIBIT_19-104.dwg



N/F
 HOPE EDUCATIONAL & RESEARCH CENTER
 DB 2775 PG 303
 17999 LAKE SAINT LOUIS BLVD
 4-0021-5560-00-000A

N/F
 LAKE ST. LOUIS FIRE PROTECTION DISTRICT
 DB 6748 PG 2330
 1815 LAKE SAINT LOUIS BLVD
 4-0021-5560-00-000B



NO	DATE	REVISION DESCRIPTION

DEVELOPER/OWNER:
CITY OF LAKE SAINT LOUIS
 307 PARKWAY INDUSTRIAL DRIVE
 LAKE SAINT LOUIS, MISSOURI
 PHONE #636-695-4221

THE PROFESSIONAL ENGINEER'S SEAL APPEARS HEREON IN ACCORDANCE WITH THE PROVISIONS OF THE MISSOURI PROFESSIONAL ENGINEERING ACT. THE ENGINEER ASSUMES RESPONSIBILITY ONLY FOR WHAT APPEARS ON THIS PAGE, AND DISCLAIMS RESPONSIBILITY FOR ALL OTHER PAGES. THIS DRAWING IS THE PROPERTY OF THE ENGINEER AND SHALL NOT BE REPRODUCED OR TRANSMITTED IN ANY FORM OR BY ANY MEANS, ELECTRONIC OR MECHANICAL, INCLUDING PHOTOCOPYING, RECORDING, OR BY ANY INFORMATION STORAGE AND RETRIEVAL SYSTEM, WITHOUT THE WRITTEN PERMISSION OF THE ENGINEER. FOR ANY PART OR PARTS OF THE PROJECT TO WHICH THIS PAGE REFERS.

LAKE SAINT LOUIS BOULEVARD
 IMPROVEMENTS-PHASE 3
 STP-548(618)

CITY OF LAKE SAINT LOUIS
 PLAN SHEET

ST. CHARLES
 1530 S. PINE STREET
 SUITE 207
 LAKE SAINT LOUIS, MO 63305
 636.762.7500 #1

CIVIL ENGINEERING / SURVEYING / PLANNING / LANDSCAPE ARCHITECTURE
 COLE & ASSOCIATES, INC.

DESIGN/CALC BY	TDB
DRAWN BY	RG
CHECKED BY	JFH
DRAWING SCALE	1"=20'
DATE	03/09/2020
Job Number	19-0104
Sheet Number	C8.0